

# Salve-in-terra<sup>®</sup>

Extraordinary, therapeutic and surprisingly relaxing



Awarded the Health Spa Award for “Best Technical Product Innovation”

**STRIKING  
WELLNESS CONCEPTS**  
are our **FORTÉ!**

Esa Ranta

# SALVE-IN-TERRA® – awarded the Health Spa Award for best technical innovation



Esa Ranta  
Owner and  
Managing Director of  
Kurland GmbH

Developing a wide variety of treatment concepts in order to continually be able to offer guests something new is a recurring challenge for spa managers.

Striking wellness concepts are our forté!

**That is why we had multiple aims in the development of our Salve-in-terra®:**

- achieving the quickest possible relaxation for the guest
- offering a therapeutic effect
- providing a treatment as special experience

We achieved this in 2009 with our Salve-in-terra® and won the **Health Spa Award of the year** (Best Technical Product Innovation) as a result. **Now, we have**

**developed this system further in order to be able to offer even more flexible treatments.**

In combination with our natural consumables, Salve-in-terra® enables you to offer your guests new treatments in a wide variety of themes: Anti Ageing, Detox, Anti Stress or Beautiful Skin – we have the equipment, the recipes and the products for your success.

Warm wishes,

A handwritten signature in blue ink that reads "Esa Ranta". The signature is fluid and cursive.

Esa Ranta



## The quickest possible relaxation – letting go more easily with gentle movement

Memories of a time when we could let go without worrying, without having to take control, are awoken.

Gentle rocking takes us back to our last holiday in a hammock or on a boat as a light breeze caressed our hair and we were able to just relax.

Our Salve-in-terra® evokes these positive sensations in four ways:

- The guest is set in motion with gentle rocking motions.
- The skincare product works on the skin and reinforces the floating feeling. The guest surrenders to the rocking motion.
- The gentle contact with the soft bed and the care product stimulates the touch sensors in the skin and transmits these sensations to the limbic system.
- The body is moistened with the skincare product again and again thanks to the movement, it can work more intensively.

## The therapeutic effect – supported by natural products

The second component of our new Salve-in-terra® treatment is the skincare product.

This results in the limitless possibilities for adding an extra therapeutic benefit to the relaxing effect.

For any ingredient-oriented treatment, the application of the care product to the skin is the most important factor. In this case, Salve-in-terra® does this job. Throughout the treatment, the guest is continuously bathed with nourishing cream, gently exfoliating mixtures, fragrant oils, therapeutic moor mud, or energising or relaxing consumable products.

We supply the recipes and ingredients for your treatments and help you to create the “Salve-in-terra® spa menu”.

**Always varied and individual for every guest – just as they like it.**

### Therapeutic effects:

- effective skincare products are absorbed well by the skin
- muscles are relaxed
- circulation is stimulated

### For couples:

The “relationship hormone” oxytocin, which is responsible for trust and allowing closeness, is released. This has a positive effect on the feeling of companionship and can harmonise relationships.



## A special experience – gentle rocking, soft gliding

In our Salve-in-terra®, a variety of stimuli work on the guest: gentle movement, soft gliding, a soft touch and fragrant skincare products.

This combination of pleasant sensations combines to create a unique experience.

Familiar treatments take place in a static position. Whether in the sauna or the steam bath – the guest lies or sits largely still; the room temperature makes the difference.

However, special experiences linger in the memory and bring your guests back time and again. The wide variety of therapeutic options using versatile consumable products ensures that each visit remains unique and varied in the future with Salve-in-terra® – all this with minimal need of spa staff.

Individual treatment procedures can be controlled automatically. The treatment runs as if on its own, and the guest enjoys quick relaxation with added therapeutic value.

## Recipes for your spa menu – relax, and at the same time exfoliate, purify, apply creams and nourish

### Feeling good – Beautiful Skin

Our goats' milk bath, our cream peel mix and our fire, water, earth or air oil blends (according to type) leave your skin wonderfully radiant.



### Heart & Soul – Anti-Stress

Our coconut oil, essential orange oil and base cream I are the main ingredients in this stress-reducing recipe. The fragrance makes you happy. Salve-in-terra® does the rest.



### Forever Young – Anti-Ageing

Aloe vera oil and our new Thalasso Mare body pack ensure firm skin and stimulate cell regeneration. For a youthful glow and smoother skin.

### Relaxed Detox Purify

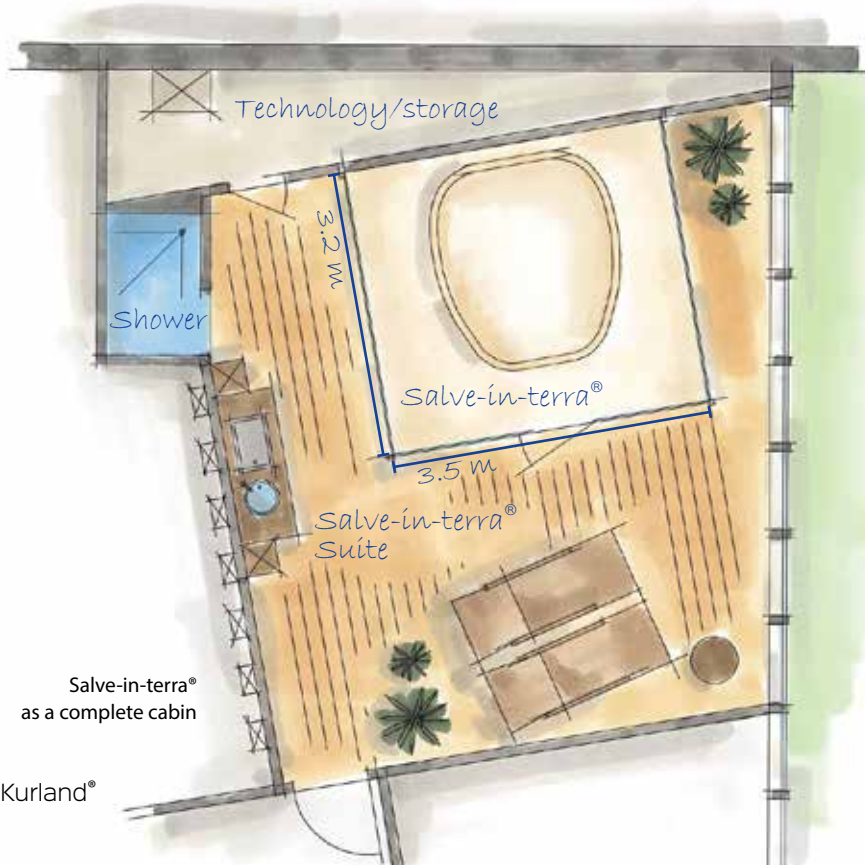
Our Adventure oil blend stimulates the metabolism and improves circulation, Rügen healing chalk and soap flakes make the perfect recipe for a relaxing pack.

### Recipes and treatments:

You can get all the ingredients and the exact recipes from us. Simply mix – done. Guests apply the mixture themselves in Salve-in-terra®. The skin is moistened again and again with the powerful mixture thanks to the rocking movement.

# New design, new technology, plenty of benefits

Your wishes and ideas know almost no limits!



Salve-in-terra®  
as a complete cabin

## Two models:

- as a complete cabin incl. walls, ceiling, technology and Salve-in-terra®
- as a Salve-in-terra® lounger with technology for integration into new or existing treatment rooms

## Various room climates:

- Salve-in-terra® as a steam bath
- Salve-in-terra® as a bath with dry heat thanks to infrared technology

## New design

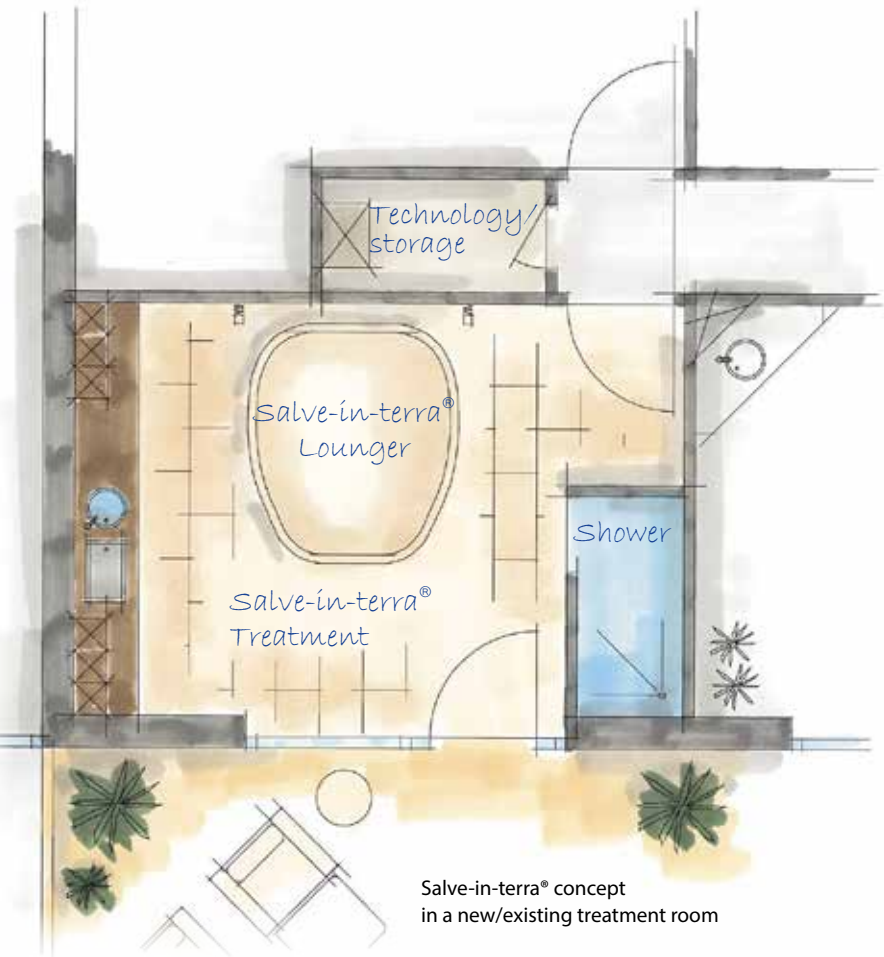
- exclusive cabin design thanks to real glass walls with sandblasting or adhesive film
- fittings, rear wall and floor tiling according to customer specifications



- free choice of colour for the Salve-in-terra® lounger and the fibreglass and plastic ceiling according to RAL

### Plenty of benefits

- cabin sizes of approx. 3.50 x 3.20 m allow for many comfortable treatments
- new treatment concepts, including a special concept for treatments in dry warmth
- individual treatments or couples and two-person treatments possible
- individual cabin ambience according to the customers' wishes, from modern to traditional
- special light effects thanks to innovative LED lighting of the glass walls
- self-cleaning system for efficient use without time-intensive use of personnel



Salve-in-terra® concept  
in a new/existing treatment room

## Technical details

### Connections, dimensions, etc.

**Electrical connection:** 3 x 400 V/50 Hz  
3 x 16 A

**Output:** approx. 9 kW as a steam bath  
approx. 6 kW with infrared  
technology

**Cabin dimensions:**

L x W x H: approx. 3.50 x 3.20 x 2.50 m

**Salve-in-terra® lounger dimensions:**

L x W x H: approx. 2.25 x 2.00 x 0.60 m

**Salve-in-terra® lounger weight:**

approx. 150 kg



We develop **WELLNESS CONCEPTS**  
for the quickest possible **RELAXATION,**  
with **THERAPEUTIC EFFECTS**  
and for **SPECIAL EXPERIENCES.**

Esa Ranta



Planning,  
conception,  
facility design  
and technical  
equipment  
for therapy and  
spa facilities



Balneology,  
natural healing compounds,  
peloids, herbs, oils,  
cream bases,  
cosmetic concepts,  
premium quality  
consumables

**Austria:**

Kurland Österreich GmbH  
Moosstraße 131  
5020 Salzburg  
AUSTRIA

Phone: +43 (0) 662/83 06 67  
Fax: +43 (0) 662/82 17 40  
E-Mail: office@kurland.at



FIND US ON FACEBOOK  
KURLANDproducts  
KurlandGmbH

**Germany:**

Kurland GmbH  
Kirchenwegstraße 5  
83404 Ainring  
GERMANY

Phone: +49 (0) 8654 /48 87-22  
Fax: +49 (0) 8654 /48 87-55  
E-Mail: info@kurland.de

**Export:**

Phone: +49 (0) 8654 /48 87-41  
Fax: +49 (0) 8654 /48 87-55  
E-Mail: export@kurland.de

Order now in the online shop: [www.kurland.info](http://www.kurland.info)